

EMBARGOED UNTIL 11.30 A.M. 2 SEPTEMBER 1985

**LABOUR FORCE STATUS AND EDUCATIONAL
ATTAINMENT, AUSTRALIA**

FEBRUARY 1985

A. R. BAGNALL

Acting Australian Statistician

AUSTRALIAN BUREAU OF STATISTICS

CATALOGUE NO. 6235.0

(F)

© Commonwealth of Australia 1985

PHONE INQUIRIES *for more information about these statistics*—contact Mr Chris Lynch on Canberra (062) 52 6661 or any of our State offices.
other inquiries including copies of publications—contact Information Services on Canberra (062) 52 6627 or in any of our State offices.

MAIL INQUIRIES *write to* Information Services, ABS, P.O. Box 10, Belconnen, A.C.T. 2616 or any of our State offices.

CONTENTS

<i>Table</i>	<i>Page</i>
.. Explanatory notes	1
.. Summary of findings	3
 Civilian population aged 15 and over	
Educational attainment and sex—	
1 Labour force status, February 1982 to February 1985	6
2 Unemployment rate, average and median duration of unemployment, February 1980 to February 1985	7
3 Labour force status	8
4 Unemployment rate and unemployment/population ratio by age	9
5 Age	10
6 Family status	11
7 Main field of study, age and labour force status	12
 Employed persons	
Educational attainment—	
8 Industry and sex	13
9 Occupation and sex	14
10 Age and sex	15
 Unemployed persons	
Educational attainment and sex—	
11 Age	16
12 Duration of current period of unemployment	17
 Persons not in the labour force	
Educational attainment—	
13 Major activity and whether in the labour force in the last 12 months	18
.. Additional tables	19
.. Technical note	20

EXPLANATORY NOTES

Introduction

The monthly Population Survey (which is described in *The Labour Force, Australia* (6203.0)) comprises the monthly labour force survey and supplementary topics. This publication contains some results of a supplementary survey run in association with the February 1985 labour force survey conducted throughout Australia.

2. Of the respondents to the labour force survey, those who fell within the scope of the supplementary survey were asked additional questions. This subset of respondents was asked about their highest educational qualifications. For persons with post-school qualifications, the information sought includes field of study, and for those who did not complete their schooling, it includes the age at which they left school.

Scope

3. The scope of this supplementary survey was the same as that used for the labour force survey (described in full in *The Labour Force, Australia* (6203.0)) except that it excluded students boarding at school, some patients in hospitals and sanatoria and inmates of jails, reformatories etc.

Definitions

4. Definitions of the principal labour force categories appearing in this publication are given in *The Labour Force, Australia* (6203.0), but it should be noted that there are slight differences in the estimates for some labour force categories shown in these publications. This is due to the different sizes of the samples used and the inability to obtain from a small number of persons the additional information required for the educational qualifications survey. Although the estimation procedures take account of these factors, estimates for some characteristics will be affected.

5. *Persons with a post-school qualification* are those who have left school and who answered 'Yes' to the question: 'Since leaving school have you obtained a certificate, diploma, degree or any other qualification?'

6. *Classification of post-school qualifications.* Respondents indicate which one of the following groups best describes their highest qualification:

- (a) *Degree:* a bachelor degree (including honours), a graduate or post-graduate diploma, masters degree or a doctorate;
- (b) *Trade; technical or other certificate:* completion of an approved trade/technician apprenticeship or training course, other certificate or diploma in secretarial or business studies, administration, teaching, nursing, etc.;
- (c) *Other:* completion of other post-secondary education, e.g. adult education, preparatory/bridging course or hobby course.

7. *Classification of field of study.* Respondents with a degree; trade; or technical certificate qualification (i.e. (a) or (b) in paragraph 6) indicate the field of study for their highest qualification (see Table 7).

8. *Highest level of secondary school available* refers to the highest level of secondary schooling (or equivalent) offered by the education system at the time the respondent left school.

9. *Still at school.* Current school attendance is recorded only for persons aged fifteen to twenty years.

10. *The unemployment/population ratio* for any group is the number of unemployed persons expressed as a percentage of the civilian population in the same group.

11. *Family status* characteristics are explained in detail in *The Labour Force, Australia* (6203.0). It should be noted that they were not obtained for all persons included in the survey. Family information was not collected for the following persons (identified in tables as 'not family coded'):

- (a) all persons enumerated in non-private dwellings (including hotels, motels, hospitals and other institutions);
- (b) persons enumerated as visitors to, rather than usual residents of, private dwellings; and
- (c) where it was not possible to obtain family information relating to *all* the usual residents of a household, e.g. where one member of the family was a member of the permanent defence forces and therefore outside the scope of the survey.

Results of the survey

12. Additional tables available but not included in this publication are listed on page 19. A preliminary publication (6240.0) containing a summary of the results of the survey was released on 15 May 1985.

13. Results of similar surveys, the first conducted in February 1979, have been given in previous issues of this publication.

Comparability of estimates

14. Educational attainment of persons not in the labour force is not available for the February 1979, 1980 and 1981 surveys which only covered persons in the labour force.

15. Estimates in this series are not strictly comparable with those from the population censuses due to differences in questions and coding methodology.

Reliability of the estimates

16. Estimates in this publication are subject to two sources of error:

- (a) *sampling error:* since the estimates are based on information obtained from occupants of a sample

of dwellings, they may differ from the figures that would have been produced if all dwellings had been included in the survey. More information on this topic is given in the Technical note.

- (b) *non-sampling error*: inaccuracies may occur because of imperfections in reporting by interviewers and respondents and errors made in the coding and processing of data. These inaccuracies may occur in any enumeration, whether it be a full count or a sample. Every effort is made to reduce the non-sampling error to a minimum by careful design of questionnaires, intensive training and supervision of interviewers and efficient operating procedures.

Related publications

17. Other ABS publications which may be of interest include:

The Labour Force, Australia(6203.0)—issued monthly

Transition from Education to Work, Australia, May 1985 Preliminary (6241.0)

18. Current publications produced by the ABS are listed in the *Catalogue of Publications, Australia*(1101.0). The ABS also issues, on Tuesdays and Fridays, a *Publications Advice* (1105.0) which lists publications to be released in the next few days. The Catalogue and Publications Advice are available from any ABS office.

Symbols and other usages

- * subject to sampling variability too high for most practical uses. See paragraph 16 above.
- n.e.c. not elsewhere classified
- .. not applicable
- r revised

19. Because figures have been rounded, discrepancies may occur between sums of the component items and totals.

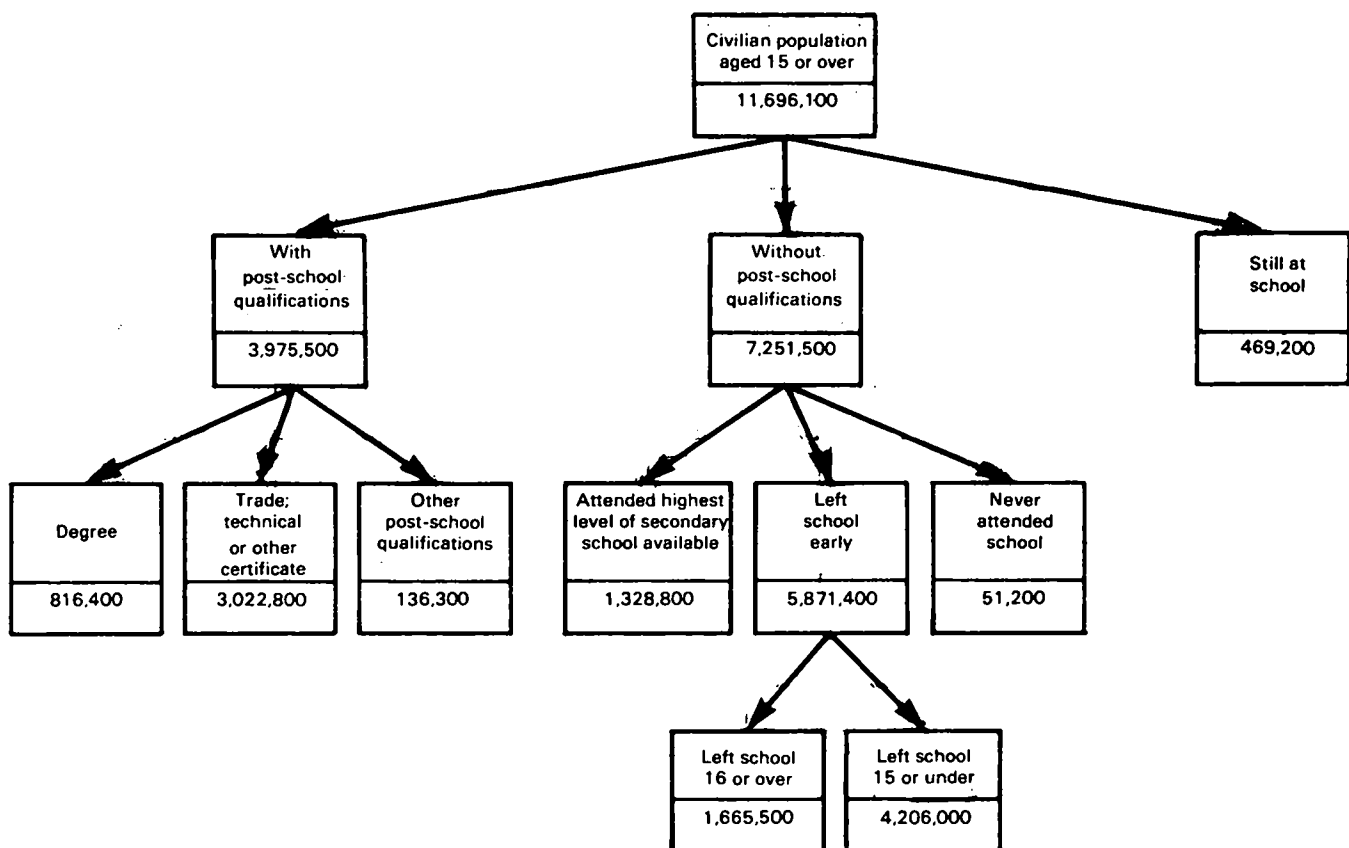
SUMMARY OF FINDINGS

There were an estimated 11,696,100 persons in the civilian population aged 15 years or over in February 1985. Of these, 34.0 per cent (3,975,500 persons) had obtained a post-school qualification, 62.0 per cent (7,251,500 persons) were without post-school qualifications, and 4.0 per cent (469,200 persons) were still at school.

Of the persons who had obtained post-school qualifications, 20.5 per cent (816,400) had a degree or equivalent, 76.0 per cent (3,022,800) had obtained a trade; technical or other certificate qualification, and 3.4 per cent (136,300) had obtained some other post-school qualification. The corresponding proportions in February 1984 were 19.4 per cent, 78.1 per cent and 2.5 per cent respectively.

Of the persons in the February 1985 survey who had not obtained post-school qualifications, 1,328,800 had attended the highest level of secondary school available, and 5,871,400 had left school early (1,665,500 left school aged 16 years or over and 4,206,000 left school at age 15 years or under).

DIAGRAM 1. CIVILIAN POPULATION: EDUCATIONAL ATTAINMENT
(Source: Table 3)



Females and older persons were less likely to possess post-school qualifications. Of females aged 25-34 years, 41.5 per cent had post-school qualifications. This proportion steadily decreased with age with only 16.6 per cent of females aged 55 and over possessing post-school qualifications. For males a similar pattern emerged though the proportions were much higher, the corresponding figures being 52.2 per cent of 25-34 year old males and 32.9 per cent of males aged 55 and over.

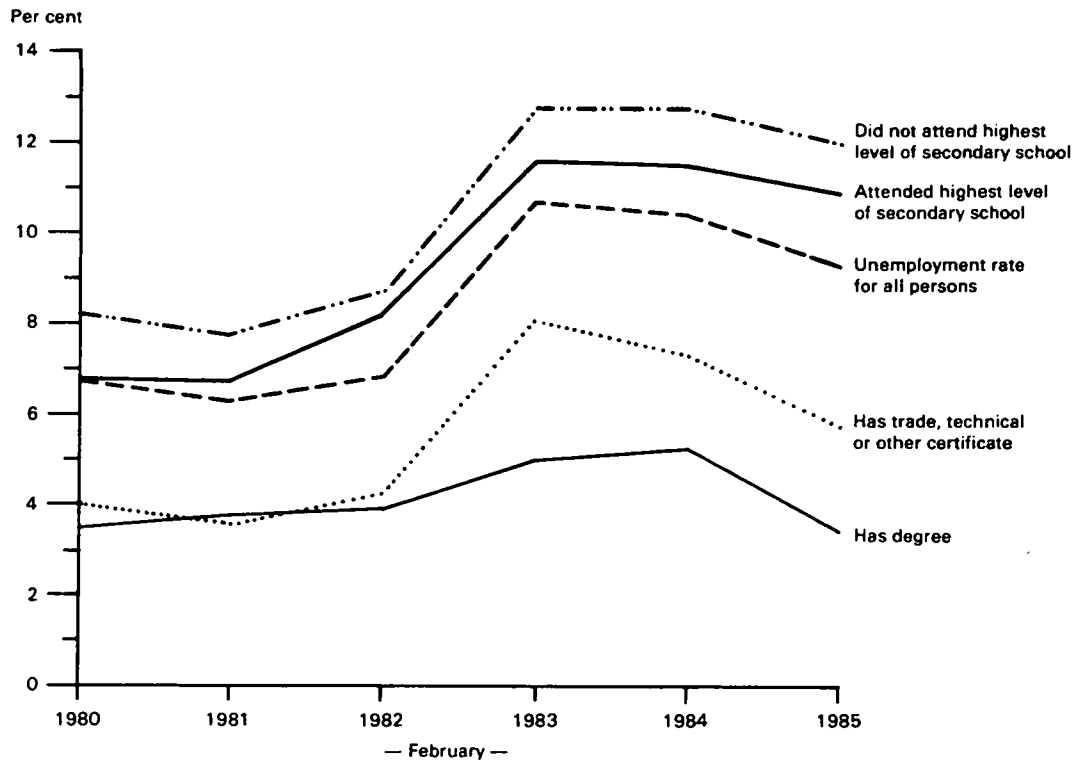
Educational Attainment of the Labour Force

Over the period February 1980 to February 1985 significant changes occurred in the relative proportions of each of the different types of educational qualifications attained by persons in the labour force. The proportion of persons who left school aged 15 years or under decreased from 33.9 per cent of the labour force to 27.2 per cent. The proportion of persons with trade; technical or other certificate qualifications rose from 29.1 per cent of the labour force in February 1980 to 32.3 per cent in February 1984 then fell to 31.5 per cent in February 1985. The proportion of persons with a degree increased from 6.7 per cent to 9.5 per cent over the period to February 1985.

Unemployment rates

The unemployment rate for all persons fluctuated over the period February 1980 to February 1985, but dropped significantly from 10.4 per cent in February 1984 to 9.3 per cent in February 1985. Corresponding decreases were recorded for all categories of educational attainment.

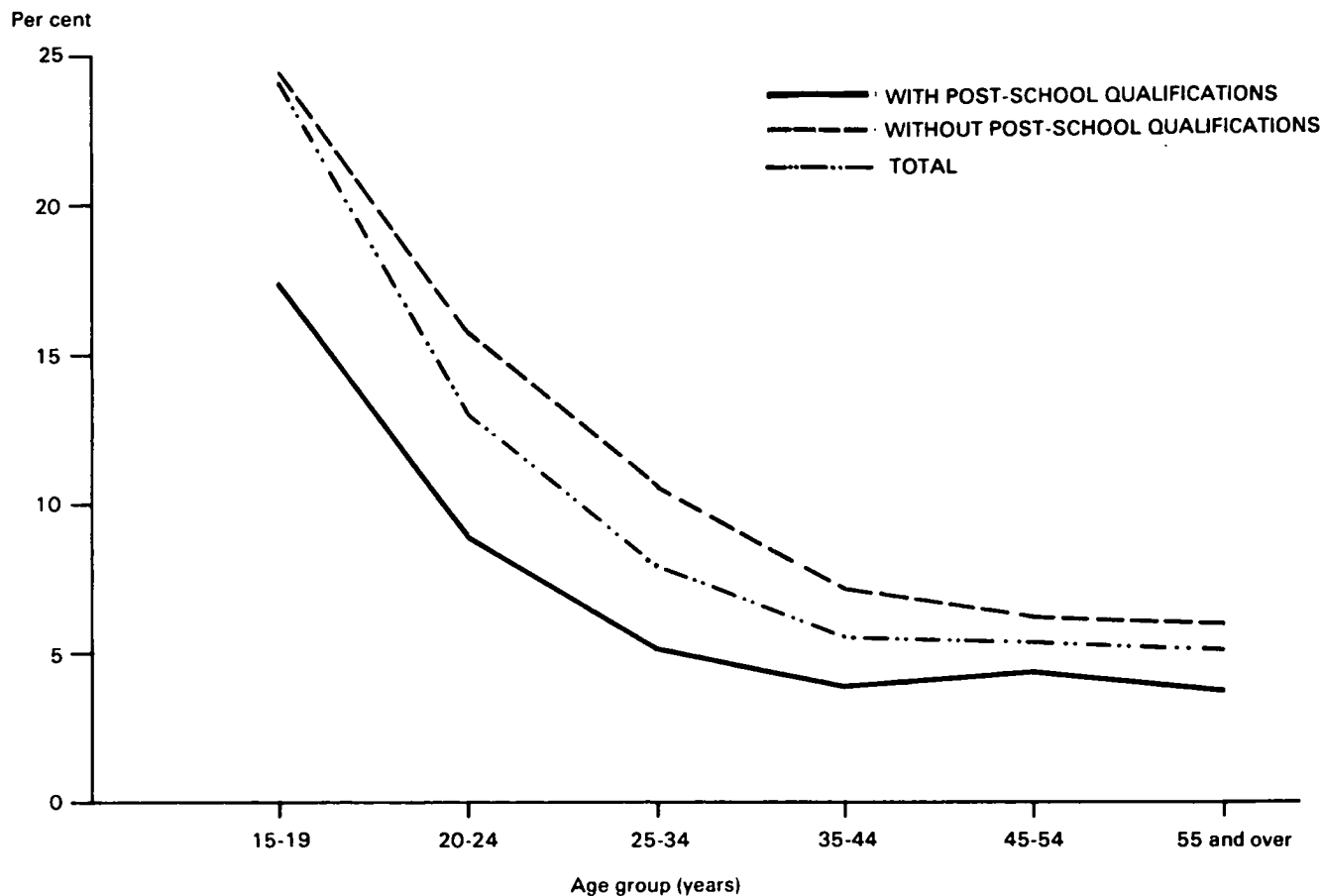
DIAGRAM 2. CIVILIAN POPULATION: EDUCATIONAL ATTAINMENT, UNEMPLOYMENT RATES, FEBRUARY 1980 TO FEBRUARY 1985
(Source of data: Table 2)



For a given level of educational attainment the unemployment rate decreases as age increases. For those persons without post-school qualifications the unemployment rate of 15-19 year olds is 1½ times that of 20-24 year olds and double that of 25-34 year olds. A similar pattern occurs for those persons with post-school qualifications.

The large unemployment rate of persons still at school (27.2 per cent) distorts the overall unemployment rate for the 15-19 year age group. An alternative measure is the unemployment/population ratio. The unemployment/population ratio for 15-19 year olds is still significantly larger than the ratio for any other age group.

DIAGRAM 3. CIVILIAN POPULATION: EDUCATIONAL ATTAINMENT, AGE AND UNEMPLOYMENT RATES, FEBRUARY 1985
(Source of data: Table 4)



Duration of Unemployment

The average duration of current unemployment varied according to educational qualifications; for all unemployed persons the average duration of current unemployment was 44.6 weeks, significantly higher than the 41.9 weeks recorded in February 1984. However, the median duration of unemployment dropped from 19.8 weeks in February 1984 to 16.8 weeks in February 1985. Corresponding changes in both medians and averages were recorded for all categories of educational attainment, except for those who attended the highest level of secondary school available—their average duration of unemployment fell from 35.6 weeks to 29.0 weeks.

Persons Not in the Labour Force

Of the 1,309,500 males and 3,136,700 females not in the labour force, most (61.3 per cent for males, 76.1 per cent for females) were without post-school qualifications in February 1985. (The corresponding proportions were 60.9 per cent and 74.7 per cent respectively in February 1984.) Similar proportions were recorded across all age groups except for 15-19 year olds (where the great majority, 76.3 per cent, were still at school).

Just over half of all females (52.1 per cent) who were not in the labour force left school aged 15 years or under, compared with 45.7 per cent for males. (The corresponding figures in 1984 were 51.7 per cent and 46.0 per cent respectively.)

TABLE 1. CIVILIAN POPULATION : LABOUR FORCE STATUS AND EDUCATIONAL ATTAINMENT,
FEBRUARY 1982 TO FEBRUARY 1985
(' 000)

		Educational attainment							
		With post-school qualifications			Without post-school qualifications				
		Degree	Trade; technical or other certificate	Total (a)	Attended highest secondary level	Did not attend highest level of secondary school and left at age (years)		Total (b)	Total (c)
Labour force status at February—		Year				16 or over	15 or under		
MALES									
Employed	1982	363.7	1,399.2	1,789.1	483.3	570.5	1,198.1	2,259.9	4,082.9
	1983	386.9	1,368.6	1,789.6	487.0	542.4	1,108.9	2,144.1	3,959.2
	1984	425.1	1,424.9	1,881.2	454.3	544.5	1,074.4	2,081.3	4,000.3
	1985	435.6	1,410.0	1,894.1	505.4	573.4	1,058.3	2,142.7	4,072.5
Unemployed	1982	8.4	41.6	50.6	35.2	61.9	94.6	192.3	251.7
	1983	14.5	106.5	124.6	59.0	91.9	151.2	303.6	440.8
	1984	18.9	96.7	118.6	60.6	89.0	149.5	301.6	435.8
	1985	12.5	77.7	94.4	60.3	79.3	143.7	284.0	390.4
In the labour force	1982	372.1	1,440.9	1,839.7	518.5	632.4	1,292.7	2,452.3	4,334.7
	1983	401.4	1,475.1	1,914.2	546.1	634.2	1,260.1	2,447.7	4,440.0
	1984	444.1	1,521.6	1,999.8	514.9	633.6	1,223.9	2,382.9	4,436.2
	1985	448.0	1,487.7	1,988.5	565.7	652.7	1,202.0	2,426.7	4,462.9
Not in the labour force	1982	38.9	215.3	257.2	96.2	72.7	525.8	707.9	1,128.1
	1983	42.4	226.4	275.0	109.3	80.8	544.7	748.0	1,187.7
	1984	49.0	244.3	297.4	103.7	72.2	569.8	754.2	1,237.5
	1985	57.0	256.2	320.0	107.3	83.7	598.1	803.0	1,309.5
Civilian population	1982	410.9	1,656.1	2,096.9	614.7	705.1	1,818.5	3,160.2	5,462.8
	1983	443.7	1,701.4	2,189.2	655.4	715.0	1,804.7	3,195.7	5,587.7
	1984	493.1	1,765.9	2,297.2	618.6	705.7	1,793.7	3,137.1	5,673.7
	1985	505.1	1,743.9	2,308.5	673.1	736.3	1,800.1	3,229.7	5,772.4
FEMALES									
Employed	1982	153.9	655.5	833.0	283.7	410.0	741.9	1,440.4	2,314.6
	1983	170.8	667.5	846.6	292.7	389.6	707.2	1,393.4	2,295.8
	1984	184.3	704.1	918.8	333.3	387.0	674.5	1,061.5	2,365.7
	1985	227.2	742.8	1,011.8	327.9	426.8	686.5	1,442.3	2,503.7
Unemployed	1982	12.8	50.8	65.5	33.6	47.1	74.3	155.4	232.7
	1983	15.0	68.9	87.4	43.3	66.7	94.8	206.0	305.9
	1984	14.2	71.1	88.5	41.4	62.6	93.5	198.0	301.9
	1985	11.2	53.7	70.6	41.2	65.9	85.8	192.8	283.2
In the labour force	1982	166.7	706.3	898.5	317.2	457.1	816.3	1,595.7	2,547.3
	1983	185.7	736.5	952.0	336.1	456.3	802.0	1,599.4	2,601.7
	1984	198.5	775.2	1,007.2	374.7	449.5	768.0	1,597.3	2,667.6
	1985	238.4	796.5	1,082.4	369.1	492.7	772.2	1,635.2	2,787.0
Not in the labour force	1982	67.5	449.0	536.9	267.1	397.3	1,639.1	2,329.8	3,018.0
	1983	63.5	471.9	561.7	280.8	385.0	1,658.2	2,351.9	3,073.9
	1984	71.9	532.9	632.7	281.8	417.5	1,626.1	2,350.5	3,147.1
	1985	73.0	482.4	584.6	286.7	436.4	1,633.6	2,386.6	3,136.7
Civilian population	1982	234.2	1,155.3	1,435.4	584.3	854.4	2,455.2	3,925.6	5,565.2
	1983	249.2	1,208.3	1,513.7	616.9	841.3	2,460.2	3,951.3	5,675.7
	1984	270.4	1,308.1	1,640.0	656.5	867.0	2,394.1	3,947.7	5,814.7
	1985	311.4	1,278.8	1,667.0	655.7	929.2	2,405.8	4,021.8	5,923.7
PERSONS									
Employed	1982	517.6	2,054.8	2,622.1	766.9	980.5	1,940.0	3,700.3	6,397.5
	1983	557.6	2,036.1	2,654.2	779.8	932.0	1,816.1	3,573.4	6,255.0
	1984	609.5	2,129.0	2,799.9	787.6	931.5	1,748.9	3,408.5	6,366.0
	1985	662.8	2,152.8	2,906.0	833.3	1,000.2	1,744.8	3,585.0	6,576.3
Unemployed	1982	21.2	92.4	116.1	68.7	108.9	168.9	347.7	484.4
	1983	29.5	175.4	212.0	102.4	158.5	246.0	509.7	746.7
	1984	33.1	167.8	207.1	102.0	151.6	243.0	499.6	737.8
	1985	23.7	131.4	164.9	101.5	145.2	229.4	476.8	673.6
In the labour force	1982	538.8	2,147.2	2,738.2	835.7	1,089.4	2,108.9	4,048.0	6,881.9
	1983	587.1	2,211.5	2,866.3	882.2	1,090.5	2,062.1	4,047.1	7,001.7
	1984	642.6	2,296.8	3,007.0	889.6	1,083.1	1,991.9	3,980.2	7,103.8
	1985	686.4	2,284.2	3,070.9	934.8	1,145.4	1,974.3	4,061.9	7,249.9
Not in the labour force	1982	106.3	664.3	794.0	363.4	470.1	2,164.8	3,037.7	4,146.1
	1983	105.8	698.2	836.7	390.1	465.8	2,202.8	3,099.9	4,261.6
	1984	120.9	777.2	930.1	385.5	489.7	2,195.9	3,104.7	4,384.7
	1985	130.0	738.6	904.6	394.0	520.1	2,231.7	3,189.6	4,446.2
Civilian population	1982	645.1	2,811.4	3,532.2	1,199.0	1,559.5	4,273.8	7,085.7	11,028.0
	1983	693.0	2,909.8	3,702.9	1,272.3	1,556.3	4,265.0	7,147.0	11,263.4
	1984	763.5	3,074.0	3,937.1	1,275.1	1,572.8	4,178.8	7,084.8	11,488.4
	1985	816.4	3,022.8	3,975.5	1,328.8	1,665.5	4,206.0	7,251.5	11,696.1

(a) Includes persons with other post-school qualifications. (b) Includes persons who never attended school. (c) Includes persons aged 15 to 20 years still at school.

TABLE 2. UNEMPLOYED PERSONS : EDUCATIONAL ATTAINMENT, UNEMPLOYMENT RATE, AVERAGE AND MEDIAN DURATION OF UNEMPLOYMENT, FEBRUARY 1980 TO FEBRUARY 1985

	Educational attainment						Total(c)
	With post-school qualifications			Without post-school qualifications			
	Degree	Trade; technical or other certificate	Total(a)	Attended highest secondary level	Did not attend highest level of secondary school	Total(b)	
MALES							
Unemployment rate (per cent)—							
1980	3.3	2.9	3.1	4.8	7.4	6.8	5.5
1981	2.7	2.5	2.6	5.7	7.1	6.8	5.3
1982	2.3	2.9	2.7	6.8	8.1	7.8	5.8
1983	3.6	7.2	6.5	10.8	12.8	12.4	10.0
1984	4.3	6.4	5.9	11.8	12.8	12.7	9.8
1985	2.8	5.2	4.7	10.7	12.0	11.7	8.7
Average duration (weeks)—							
1980	18.6	24.6	24.0	15.7	32.9	30.6	28.4
1981	19.4	25.2	23.9	26.2	41.1	38.6	34.5
1982	20.6	31.0	29.0	22.3	37.5	34.9	32.9
1983	20.2	23.3	23.4	24.8	37.7	35.2	31.2
1984	34.7	35.3	35.3	37.5	54.4	51.2	45.6
1985	30.6	42.9	40.3	32.7	63.5	57.4	51.9
Median duration (weeks)—							
1980	9.8	8.8	9.6	10.8	15.7	14.1	12.3
1981	9.1	9.5	9.3	11.5	19.4	16.9	12.8
1982	8.1	11.8	11.0	10.0	14.4	13.1	12.2
1983 r	11.0	12.7	12.5	12.6	19.2	17.7	14.9
1984 r	13.0	21.4	19.5	15.5	39.2	32.4	26.6
1985	12.9	15.9	14.8	12.3	29.2	26.1	22.1
FEMALES							
Unemployment rate (per cent)—							
1980	*	6.4	6.0	10.2	9.5	9.7	8.7
1981	6.9	5.5	6.0	8.2	8.8	8.7	8.0
1982	7.7	7.2	7.3	10.6	9.5	9.7	9.1
1983	8.0	9.4	9.2	12.9	12.9	12.9	11.8
1984	7.1	9.2	8.8	11.0	12.8	12.4	11.3
1985	4.7	6.7	6.5	11.2	12.0	11.8	10.2
Average duration (weeks)—							
1980	*	20.6	21.4	20.6	29.7	28.6	26.5
1981	16.4	22.9	20.8	21.3	31.8	30.0	26.8
1982	12.8	20.4	19.4	20.1	31.8	29.2	25.6
1983	23.6	22.4	23.3	24.1	36.5	33.8	30.5
1984	11.7	26.6	25.0	32.9	45.9	43.3	36.4
1985	23.0	27.4	29.4	23.7	42.5	38.5	34.6
Median duration (weeks)—							
1980	*	9.1	9.4	10.0	11.1	11.0	10.6
1981	10.1	10.3	9.8	10.5	11.4	11.2	10.6
1982	8.6	8.4	8.6	8.7	11.1	10.4	9.6
1983 r	9.6	9.1	9.5	10.8	14.9	13.5	12.3
1984 r	8.1	9.6	9.8	12.4	18.5	16.6	13.1
1985	5.4	8.7	9.1	10.4	19.2	14.4	12.7
PERSONS							
Unemployment rate (per cent)—							
1980	3.5	4.0	4.0	6.8	8.2	8.0	6.7
1981	3.8	3.6	3.7	6.7	7.8	7.5	6.3
1982	3.9	4.3	4.2	8.2	8.7	8.6	7.0
1983	5.0	7.9	7.4	11.6	12.8	12.6	10.7
1984	5.2	7.3	6.9	11.5	12.8	12.6	10.4
1985	3.4	5.8	5.4	10.9	12.0	11.7	9.3
Average duration (weeks)—							
1980	20.1	22.5	22.7	18.5	31.4	29.6	27.5
1981	17.8	24.0	22.2	24.0	37.0	34.8	30.9
1982	15.9	25.2	23.6	21.2	35.0	32.4	29.4
1983	22.0	23.0	23.4	24.5	37.2	34.6	30.9
1984	24.9	31.6	30.9	35.6	51.1	48.1	41.9
1985	27.0	36.6	35.7	29.0	55.0	49.7	44.6
Median duration (weeks)—							
1980	9.6	9.0	9.5	10.5	12.6	12.3	11.5
1981	9.7	9.9	9.6	11.1	15.1	13.0	11.8
1982	8.5	9.9	9.6	9.2	12.5	11.8	10.9
1983 r	9.9	10.9	11.0	11.8	17.9	16.3	13.7
1984 r	10.8	15.0	13.8	13.5	28.9	26.3	19.8
1985	9.9	13.5	12.9	10.8	26.2	20.8	16.8

(a) Includes persons with other post-school qualifications. (b) Includes persons who never attended school. (c) Includes persons aged 15 to 20 years still at school.

TABLE 3. CIVILIAN POPULATION : EDUCATIONAL ATTAINMENT AND LABOUR FORCE STATUS,
FEBRUARY 1985

Educational attainment	Employed			Unemployed		Total	In the labour force	Not in the labour force	Total	Participation rate	Unemployment rate	
	Full-time	Part-time	Total	Looking for full-time work	Looking for part-time work							
— '000—											— per cent—	
MALES												
With post-school qualifications	1,825.4	68.8	1,894.1	91.3	*	94.4	1,988.5	320.0	2,308.5	86.1	4.7	
Degree	416.3	19.2	435.6	11.8	*	12.5	448.0	57.0	505.1	88.7	2.8	
Trade; technical or other certificate	1,362.9	47.1	1,410.0	75.9	*	77.7	1,487.7	256.2	1,743.9	85.3	5.2	
Other	46.1	*	48.6	*	*	*	52.8	6.7	59.5	88.7	*	
Without post-school qualifications	2,011.9	130.8	2,142.7	274.5	9.5	284.0	2,426.7	803.0	3,229.7	75.1	11.7	
Attended highest level of secondary school available	459.6	45.8	505.4	54.7	5.7	60.3	565.7	107.3	673.1	84.1	10.7	
Did not attend highest level of secondary school available	1,546.9	84.8	1,631.7	219.1	*	222.9	1,854.7	681.8	2,536.5	73.1	12.0	
Left at age—												
18 years or over	26.8	*	29.7	5.5	*	5.5	35.2	6.8	41.9	83.8	15.6	
16 or 17 years	519.5	24.3	543.7	71.8	*	73.8	617.5	76.9	694.4	88.9	11.9	
14 or 15 years	846.6	46.6	893.1	124.2	*	125.3	1,018.4	424.4	1,442.8	70.6	12.3	
13 years or under	154.1	11.1	165.2	17.7	*	18.4	183.6	173.7	357.3	51.4	10.0	
Never attended school	5.3	*	5.5	*	*	*	6.3	13.9	20.1	31.2	*	
Still at school	*	33.9	35.7	5.4	6.6	12.0	47.7	186.5	234.2	20.4	25.1	
Total	3,839.1	233.5	4,072.5	371.2	19.2	390.4	4,462.9	1,309.5	5,772.4	77.3	8.7	
FEMALES												
With post-school qualifications	700.8	311.1	1,011.8	49.5	21.1	70.6	1,082.4	584.6	1,667.0	64.9	6.5	
Degree	175.0	52.2	227.2	7.4	*	11.2	238.4	73.0	311.4	76.6	4.7	
Trade; technical or other certificate	501.2	241.6	742.8	37.4	16.3	53.7	796.5	482.4	1,278.8	62.3	6.7	
Other	24.6	17.2	41.8	4.7	*	5.7	47.5	29.3	76.8	61.9	12.0	
Without post-school qualifications	905.7	536.7	1,442.3	151.5	41.4	192.8	1,635.2	2,386.6	4,021.8	40.7	11.8	
Attended highest level of secondary school available	219.1	108.8	327.9	31.5	9.7	41.2	369.1	286.7	655.7	56.3	11.2	
Did not attend highest level of secondary school available	686.0	427.3	1,113.3	120.0	31.7	151.7	1,265.0	2,070.0	3,335.0	37.9	12.0	
Left at age—												
18 years or over	10.6	5.3	15.8	*	*	*	20.1	12.7	32.9	61.3	*	
16 or 17 years	282.9	128.1	411.0	49.8	11.8	61.6	472.6	423.7	896.3	52.7	13.0	
14 or 15 years	344.4	266.0	610.4	60.8	16.9	77.7	688.2	1,325.5	2,013.6	34.2	11.3	
13 years or under	48.1	28.0	76.1	5.7	*	8.0	84.1	308.1	392.2	21.4	9.5	
Never attended school	*	*	*	*	*	*	*	30.0	31.1	*	*	
Still at school	*	48.9	49.6	*	16.2	19.9	69.4	165.5	234.9	29.6	28.6	
Total	1,607.1	896.6	2,503.7	204.6	78.6	283.2	2,787.0	3,136.7	5,923.7	47.0	10.2	
PERSONS												
With post-school qualifications	2,526.1	379.9	2,906.0	140.8	24.1	164.9	3,070.9	904.6	3,975.5	77.2	5.4	
Degree	591.3	71.5	662.8	19.1	4.5	23.7	686.4	130.0	816.4	84.1	3.4	
Trade; technical or other certificate	1,864.1	288.7	2,152.8	113.3	18.1	131.4	2,284.2	738.6	3,022.8	75.6	5.8	
Other	70.7	19.7	90.4	8.3	*	9.9	100.3	36.0	136.3	73.6	9.9	
Without post-school qualifications	2,917.6	667.4	3,585.0	426.0	50.9	476.8	4,061.9	3,189.6	7,251.5	56.0	11.7	
Attended highest level of secondary school available	678.7	154.6	833.3	86.1	15.4	101.5	934.8	394.0	1,328.8	70.3	10.9	
Did not attend highest level of secondary school available	2,233.0	512.1	2,745.1	339.1	35.5	374.6	3,119.7	2,751.8	5,871.4	53.1	12.0	
Left at age—												
18 years or over	37.4	8.1	45.5	9.2	*	9.8	55.3	19.5	74.8	73.9	17.7	
16 or 17 years	802.4	152.4	954.7	121.6	13.8	135.4	1,090.1	500.6	1,590.7	68.5	12.4	
14 or 15 years	1,191.0	312.6	1,503.6	184.9	18.1	203.0	1,706.6	1,749.9	3,456.5	49.4	11.9	
13 years or under	202.2	39.0	241.3	23.3	*	26.4	267.7	481.8	749.5	35.7	9.9	
Never attended school	5.9	*	6.6	*	14.4	*	7.4	43.8	51.2	14.4	*	
Still at school	*	82.8	85.3	9.1	22.8	31.8	117.2	352.0	469.2	25.0	27.2	
Total	5,446.2	1,130.1	6,576.3	575.8	97.8	673.6	7,249.9	4,446.2	11,696.1	62.0	9.3	

**TABLE 4. CIVILIAN POPULATION : UNEMPLOYMENT RATE AND UNEMPLOYMENT/POPULATION RATIO
BY EDUCATIONAL ATTAINMENT AND AGE, FEBRUARY 1985**
(per cent)

Educational attainment	Age group(years)						Total
	15-19	20-24	25-34	35-44	45-54	55 and over	
UNEMPLOYMENT RATE							
With post-school qualifications(a)	17.4	8.9	5.1	3.9	4.3	3.7	5.4
Degree	*	9.9	3.3	*	*	*	3.4
Trade; technical or other certificate	16.3	8.2	5.8	4.4	4.6	4.1	5.7
Without post-school qualifications(b)	24.4	15.7	10.8	7.2	6.2	6.0	11.7
Attended highest level of secondary school available	20.9	11.2	7.7	6.3	*	*	10.9
Did not attend highest level of secondary school available	25.9	18.2	11.9	7.4	6.2	6.0	12.0
Left at age—							
16 years or over	22.8	15.6	9.5	6.3	6.6	*	12.7
15 years or under	29.9	22.5	14.1	7.8	6.1	6.2	11.6
Still at school	27.2	*	27.2
Total	24.1	13.0	7.9	5.5	5.3	5.1	9.3
UNEMPLOYMENT/POPULATION RATIO							
With post-school qualifications(a)	16.4	8.0	4.3	3.3	3.6	1.3	4.1
Degree	*	8.5	2.9	*	*	*	2.9
Trade; technical or other certificate	15.6	7.5	4.8	3.7	3.8	1.4	4.3
Without post-school qualifications(b)	20.8	12.5	7.5	5.2	3.9	1.1	6.6
Attended highest level of secondary school available	16.4	9.1	5.9	5.2	*	*	7.6
Did not attend highest level of secondary school available	23.0	14.2	8.0	5.2	3.9	1.1	6.4
Left at age—							
16 years or over	20.3	12.9	6.6	4.5	4.3	*	8.7
15 years or under	26.4	16.2	9.2	5.4	3.8	1.1	5.5
Still at school	6.8	*	6.8
Total	15.3	10.8	6.0	4.3	3.8	1.2	5.8

(a) Includes persons with other post-school qualifications. (b) Includes persons who never attended school.

TABLE 5. CIVILIAN POPULATION : EDUCATIONAL ATTAINMENT AND AGE, FEBRUARY 1985

Educational attainment	Age group (years)						Total	(per cent)
	15-19	20-24	25-34	35-44	45-54	55 and over		
— '000—								
MALES								
With post-school qualifications	26.0	243.2	656.9	582.6	354.9	445.0	2,308.5	40.0
Degree	*	41.8	168.2	145.3	71.2	78.7	505.1	8.8
Trade; technical or other certificate	20.2	195.9	470.4	423.8	276.1	357.5	1,743.9	30.2
Other	5.8	5.5	18.3	13.5	7.6	8.9	59.5	1.0
Without post-school qualifications	382.8	414.3	601.7	500.6	424.6	905.7	3,229.7	56.0
Attended highest level of secondary school available	125.3	153.3	170.0	93.0	46.6	85.0	673.1	11.7
Did not attend highest level of secondary school available	257.3	261.1	429.7	403.9	374.3	810.3	2,536.5	43.9
Left at age--								
18 years or over	*	10.3	12.8	7.0	*	*	41.9	0.7
16 or 17 years	135.8	143.8	186.4	102.9	52.5	73.0	694.4	12.0
14 or 15 years	116.5	103.8	209.6	247.8	245.6	519.5	1,442.8	25.0
13 years or under	*	*	20.9	46.1	72.5	213.6	357.3	6.2
Never attended school	*	*	*	*	*	10.4	20.1	0.3
Still at school(a)	234.2	*	234.2	4.1
Total	643.0	657.5	1,258.5	1,083.2	779.4	1,350.7	5,772.4	100.0
FEMALES								
With post-school qualifications	58.9	232.9	524.7	388.5	202.0	259.9	1,667.0	28.1
Degree	*	41.7	130.3	75.9	32.1	30.5	311.4	5.3
Trade; technical or other certificate	53.6	178.0	374.9	293.4	160.5	218.5	1,278.8	21.6
Other	4.5	13.3	19.6	19.2	9.4	10.8	76.8	1.3
Without post-school qualifications	333.3	426.5	738.6	670.5	547.4	1,305.3	4,021.8	67.9
Attended highest level of secondary school available	116.7	140.3	145.1	83.4	52.2	118.0	655.7	11.1
Did not attend highest level of secondary school available	216.6	285.7	591.4	584.9	489.8	1,166.5	3,335.0	56.3
Left at age--								
18 years or over	*	8.1	10.0	*	*	5.9	32.9	0.6
16 or 17 years	119.2	159.4	256.5	149.2	80.6	131.4	896.3	15.1
14 or 15 years	93.1	112.1	300.6	375.1	334.2	798.5	2,013.6	34.0
13 years or under	*	6.1	24.4	56.6	74.0	230.7	392.2	6.6
Never attended school	*	*	*	*	5.5	20.8	31.1	0.5
Still at school(a)	234.7	*	234.9	4.0
Total	627.0	659.6	1,263.3	1,059.1	749.4	1,565.3	5,923.7	100.0
PERSONS								
With post-school qualifications	84.8	476.1	1,181.6	971.2	556.9	704.9	3,975.5	34.0
Degree	*	83.4	298.5	221.2	103.3	109.2	816.4	7.0
Trade; technical or other certificate	73.7	373.9	845.2	717.3	436.6	576.0	3,022.8	25.8
Other	10.3	18.8	37.8	32.7	17.0	19.7	136.3	1.2
Without post-school qualifications	716.2	840.8	1,340.3	1,171.2	972.0	2,211.0	7,251.5	62.0
Attended highest level of secondary school available	242.1	293.6	315.1	176.4	98.7	203.0	1,328.8	11.4
Did not attend highest level of secondary school available	473.9	546.7	1,021.1	988.8	864.0	1,976.8	5,871.4	50.2
Left at age--								
18 years or over	7.9	18.4	22.8	11.1	4.5	10.1	74.8	0.6
16 or 17 years	254.9	303.2	442.8	252.1	133.1	204.4	1,590.7	13.6
14 or 15 years	209.6	215.9	510.1	623.0	579.9	1,318.0	3,456.5	29.6
13 years or under	*	9.2	45.4	102.6	146.5	444.3	749.5	6.4
Never attended school	*	*	*	6.0	9.2	31.2	51.2	0.4
Still at school(a)	468.9	*	469.2	4.0
Total	1,269.9	1,317.2	2,521.9	2,142.3	1,528.9	2,916.0	11,696.1	100.0

(a) Aged 15 to 20 years only.

TABLE 6. CIVILIAN POPULATION : EDUCATIONAL ATTAINMENT AND FAMILY STATUS, FEBRUARY 1985 ('000)

Family status	Educational attainment							Total (b)	Total (c)
	With post-school qualifications			Attended highest secondary level	Without post-school qualifications				
	Degree	Trade; technical or other certificate	Total (a)		Did not attend highest level of secondary school and left at age (years)				
					16 or over	15 or under			
MALES									
Member of a family	404.5	1,463.3	1,918.0	548.3	610.2	1,504.1	2,680.3	4,823.7	
Husband	353.9	1,261.0	1,652.2	305.3	347.6	1,226.7	1,891.5	3,543.7	
With children aged 0-14 present	206.5	662.1	890.0	162.9	204.9	475.2	847.4	1,737.5	
Without children aged 0-14 present	147.4	599.0	762.2	142.4	142.7	751.5	1,044.1	1,806.2	
Not married family head	7.4	21.8	30.4	12.1	12.7	43.2	68.9	99.7	
With children aged 0-14 present	*	8.4	10.5	*	4.5	9.4	18.1	28.6	
Without children aged 0-14 present	5.4	13.4	19.9	8.3	8.2	33.8	50.8	71.1	
Child of family head	39.7	165.5	216.6	214.2	235.4	198.0	650.9	1,088.3	
Other relative of family head	*	14.9	18.7	16.8	14.5	36.1	69.0	92.0	
Not a member of a family	85.7	221.9	315.2	97.1	102.4	229.8	431.3	747.7	
Not living alone	44.4	97.2	145.4	58.1	53.8	78.1	190.5	337.0	
Living alone	41.3	124.7	169.8	39.0	48.6	151.7	240.8	410.7	
Not family coded	14.9	58.7	75.3	27.7	23.8	66.2	118.1	200.9	
Total	505.1	1,743.9	2,308.5	673.1	736.3	1,800.1	3,229.7	5,772.4	
FEMALES									
Member of a family	233.2	1,038.0	1,332.9	525.9	779.3	1,965.2	3,298.1	4,855.9	
Wife	183.4	813.4	1,042.3	319.4	554.3	1,547.8	2,437.5	3,479.8	
With children aged 0-14 present	105.7	456.4	587.4	168.4	328.5	590.1	1,091.9	1,679.3	
Without children aged 0-14 present	77.7	357.0	454.9	151.0	225.8	957.7	1,345.6	1,800.5	
Not married family head	20.4	80.7	107.5	34.8	62.4	234.3	334.8	442.3	
With children aged 0-14 present	12.1	49.2	65.5	18.6	44.1	103.0	166.5	232.0	
Without children aged 0-14 present	8.3	31.6	42.0	16.2	18.3	131.4	168.3	210.2	
Child of family head	25.1	122.8	157.0	159.7	150.1	110.8	422.3	803.1	
Other relative of family head	*	21.1	26.2	12.1	12.5	72.2	103.6	130.8	
Not a member of a family	67.8	183.3	262.8	101.1	112.9	373.5	589.7	853.9	
Not living alone	34.0	82.9	121.5	47.3	47.8	54.5	149.7	272.6	
Living alone	33.8	100.4	141.3	53.8	65.1	319.0	439.9	581.3	
Not family coded	10.4	57.5	71.2	28.7	37.0	67.2	134.0	213.9	
Total	311.4	1,278.8	1,667.0	655.7	929.2	2,405.8	4,021.8	5,923.7	
PERSONS									
Member of a family	637.7	2,501.3	3,250.9	1,074.2	1,389.4	3,469.3	5,978.4	9,679.7	
Husband or wife	537.2	2,074.4	2,694.5	624.6	901.9	2,774.5	4,329.0	7,023.5	
With children aged 0-14 present	312.2	1,118.5	1,477.4	331.2	533.4	1,065.3	1,939.3	3,416.7	
Without children aged 0-14 present	225.1	955.9	1,217.0	293.4	368.5	1,709.2	2,389.7	3,606.7	
Not married family head	27.8	102.5	137.9	46.9	75.0	277.5	403.7	541.9	
With children aged 0-14 present	14.2	57.5	76.0	22.4	48.5	112.4	184.6	260.6	
Without children aged 0-14 present	13.6	45.0	61.9	24.5	26.5	165.1	219.1	281.4	
Child of family head	64.7	288.4	373.6	373.9	385.5	308.9	1,073.1	1,891.4	
Other relative of family head	7.9	36.0	45.0	28.8	27.0	108.4	172.6	222.8	
Not a member of a family	153.5	405.3	578.0	198.2	215.3	603.3	1,020.9	1,601.6	
Not living alone	78.4	180.1	266.9	105.5	101.6	132.6	340.3	609.6	
Living alone	75.1	225.2	311.1	92.8	113.7	470.7	680.7	991.9	
Not family coded	25.2	116.2	146.6	56.4	60.8	133.4	252.1	414.9	
Total	816.4	3,022.8	3,975.5	1,328.8	1,665.5	4,206.0	7,251.5	11,696.1	

(a) Includes persons with other post-school qualifications. (b) Includes persons who never attended school. (c) Includes persons aged 15-20 years still at school.

**TABLE 7. CIVILIAN POPULATION :
MAIN FIELD OF STUDY, AGE AND LABOUR FORCE STATUS, FEBRUARY 1985**

Main field of study	Age group (years)				In the labour force		Not in the labour force	Total	Participation rate (per cent)
	15-24	25-44	45-54	55 and over	Employed	Total			
	— '000—								
MALES									
Degree—									
Administration etc.(a)	8.8	60.8	13.4	18.8	88.1	90.1	11.7	101.8	88.5
Law	*	18.9	*	*	23.2	23.8	*	25.7	92.6
Education, teaching	*	38.7	9.1	5.8	51.9	53.0	*	57.1	92.7
Medicine(b)	*	27.5	8.0	11.4	42.6	42.7	7.0	49.7	86.0
Science(c)	14.7	60.0	11.1	12.0	84.8	87.4	10.4	97.8	89.3
Engineering(d)	5.3	51.6	15.2	15.7	72.6	75.1	12.7	87.8	85.6
Architecture	*	10.6	*	*	14.0	14.3	*	16.8	85.2
Humanities(e)	4.7	42.0	8.1	6.9	52.6	55.7	6.1	61.8	90.1
Other	*	*	*	*	5.9	5.9	*	6.5	90.9
Total	41.8	313.5	71.2	78.7	435.6	448.0	57.0	505.1	88.7
Trade; technical or other certificate—									
Trades—									
Metal	44.7	147.0	51.7	67.8	244.0	262.1	49.0	311.2	84.2
Electrical	20.9	76.0	21.4	24.2	120.7	126.7	15.8	142.5	88.9
Building	36.4	130.5	48.3	57.0	215.4	228.3	44.0	272.3	83.8
Automotive	26.1	99.4	21.6	29.4	146.4	154.8	21.8	176.5	87.7
Other	35.2	132.5	41.5	60.1	215.5	227.3	42.0	269.3	84.4
Total	163.3	585.5	184.6	238.5	942.0	999.2	172.6	1,171.8	85.3
Secretarial, etc.(f)	*	4.5	*	*	8.3	9.3	*	11.9	78.3
Health, para-medical(g)	*	20.4	6.0	6.2	30.1	30.9	5.0	35.9	86.1
Engineering(h)	12.1	91.3	25.3	33.7	133.5	137.9	24.6	162.4	84.9
Teaching	*	22.0	7.3	6.5	33.5	33.9	5.2	39.1	86.6
Administration, law(i)	6.2	77.1	26.4	38.0	119.2	122.7	25.0	147.7	83.1
Science, humanities(j)	11.4	41.5	8.7	12.9	62.8	66.3	8.3	74.6	88.9
Other	13.5	52.0	16.2	18.8	80.6	87.5	13.0	100.5	87.1
Total	216.1	894.2	276.1	357.5	1,410.0	1,487.7	256.2	1,743.9	85.3
FEMALES									
Degree—									
Administration etc.(a)	7.2	17.6	*	*	22.7	24.5	4.9	29.3	83.4
Law	*	5.9	*	*	7.2	7.4	*	8.9	82.4
Education, teaching	6.8	67.3	13.0	9.1	72.2	75.0	21.1	96.1	78.0
Medicine(b)	4.9	24.5	*	4.9	30.4	31.1	7.4	38.5	80.8
Science(c)	7.1	23.7	*	*	26.3	27.5	10.0	37.5	73.3
Engineering(d)	*	*	*	*	*	*	*	*	74.5
Architecture	*	*	*	*	*	*	*	*	78.2
Humanities(e)	13.0	61.1	7.3	9.6	62.5	66.2	24.8	91.0	72.7
Other	*	*	*	*	*	*	*	*	57.4
Total	42.5	206.2	32.1	30.5	227.2	238.4	73.0	311.4	76.6
Trade; technical or other certificate—									
Trade	18.0	55.9	15.4	20.2	53.8	57.5	52.0	109.5	52.5
Secretarial, etc.(f)	117.9	233.7	49.5	66.9	275.6	296.0	171.9	467.9	63.3
Health, para-medical(g)	35.0	184.6	42.8	61.8	193.4	203.2	120.9	324.2	62.7
Engineering(h)	*	6.1	*	*	5.8	6.6	*	10.9	60.6
Teaching	17.9	102.1	23.0	33.1	105.6	113.8	62.4	176.1	64.6
Administration, law(i)	10.4	27.4	9.6	9.0	36.9	39.9	16.5	56.4	70.8
Science, humanities(j)	15.7	31.1	10.6	16.4	41.5	44.2	29.6	73.8	59.8
Other	14.9	27.4	7.9	9.8	30.3	35.3	24.7	60.0	58.8
Total	231.5	668.3	160.5	218.5	742.8	796.5	482.4	1,278.8	62.3

(a) Includes administration, business studies, commerce, economics, accounting, secretarial studies, etc. (b) Includes dentistry, pharmacy, nursing. (c) Includes mathematics, computing, veterinary and agricultural science, statistics, computer programming, chemistry, physics, etc. (d) Includes telecommunication, transport, surveying. (e) Includes languages, history, politics, philosophy, psychology, social welfare, religion, geography, art, music, etc. (f) Includes typing, secretarial studies, data processing. (g) Includes nursing, health therapy, etc. (h) Includes telecommunication, architecture, surveying, drafting, town planning etc. (i) Includes commerce, business administration, economics, book-keeping, etc. (j) Includes computing, veterinary and agricultural science, chemistry, social studies, social welfare, languages, arts, crafts, music, etc.

TABLE 8. EMPLOYED PERSONS : EDUCATIONAL ATTAINMENT AND INDUSTRY, FEBRUARY 1985
(' 000)

Industry	Educational attainment							Total (c)
	With post-school qualifications			Without post-school qualifications				
	Degree	Trade; technical or other certificate	Total (a)	Attended highest secondary level	Did not attend highest level of secondary school and left at age (years)		Total (b)	
					16 or over	15 or under		
MALES								
Agriculture, forestry, fishing and hunting	9.0	56.3	69.9	33.3	51.2	144.9	230.6	303.2
Mining	7.4	41.4	49.7	6.5	9.7	23.7	39.9	89.6
Manufacturing	46.1	337.1	390.3	80.5	131.8	251.8	465.1	856.6
Electricity, gas and water	10.4	56.2	68.1	12.1	15.0	26.8	54.1	122.1
Construction	13.6	206.5	221.9	26.5	52.3	108.6	188.8	410.8
Wholesale and retail trade	38.0	238.6	286.9	119.7	125.6	168.9	414.3	727.2
Transport and storage	12.2	94.1	111.1	32.7	46.8	118.3	198.7	310.2
Communication	7.2	37.6	47.5	11.9	14.0	26.2	52.2	99.6
Finance, property and business services	78.9	91.2	174.4	77.3	46.1	45.7	169.1	345.3
Public administration and defence	43.6	53.0	100.2	34.7	21.0	49.1	105.3	205.4
Community services	158.3	133.3	296.3	37.0	28.3	52.8	118.2	414.9
Recreation, personal and other services	10.6	64.6	78.1	33.2	31.7	41.5	106.6	187.6
Total	435.6	1,410.0	1,894.1	505.4	573.4	1,058.3	2,142.7	4,072.5
FEMALES								
Agriculture, forestry, fishing and hunting	5.5	25.3	33.0	11.9	19.5	41.9	73.7	108.1
Mining	*	*	*	*	*	*	5.8	9.0
Manufacturing	12.3	52.8	70.0	36.5	68.2	128.4	233.4	304.2
Electricity, gas and water	*	4.6	5.2	*	4.6	7.3	7.3	12.5
Construction	*	17.3	20.7	7.3	10.6	18.8	36.7	57.6
Wholesale and retail trade	16.5	107.9	137.2	82.0	116.2	182.3	380.7	555.6
Transport and storage	*	19.4	21.7	4.9	10.5	18.9	34.3	56.0
Communication	*	7.0	9.2	6.0	8.2	14.9	29.1	38.7
Finance, property and business services	21.0	88.4	113.4	57.9	58.4	60.8	177.2	291.9
Public administration and defence	16.3	32.7	51.6	19.6	21.2	20.1	60.9	112.6
Community services	140.0	314.8	462.5	62.5	70.1	115.6	248.4	713.1
Recreation, personal and other services	8.5	71.2	84.1	35.0	39.7	80.1	154.8	244.5
Total	227.2	742.8	1,011.8	327.9	426.8	686.5	1,442.3	2,503.7
PERSONS								
Agriculture, forestry, fishing and hunting	14.5	81.7	102.9	45.2	70.7	186.9	304.3	411.3
Mining	8.9	42.8	52.8	8.0	11.3	26.4	45.7	98.5
Manufacturing	58.4	389.9	460.3	117.0	200.0	380.1	698.5	1,160.8
Electricity, gas and water	10.7	60.8	73.3	14.8	17.5	28.8	61.4	134.6
Construction	15.2	223.8	242.6	33.8	62.9	127.4	225.5	468.4
Wholesale and retail trade	54.5	346.6	424.1	201.7	241.8	351.2	795.0	1,282.8
Transport and storage	14.0	113.5	132.7	37.6	57.3	137.2	233.0	366.2
Communication	9.1	44.6	56.7	18.0	22.2	41.1	81.3	138.3
Finance, property and business services	99.9	179.6	287.8	135.2	104.5	106.5	346.2	637.2
Public administration and defence	60.0	85.7	151.8	54.3	42.2	69.2	166.2	318.0
Community services	298.3	448.1	758.9	99.4	98.4	168.4	366.6	1,128.0
Recreation, personal and other services	19.2	135.8	162.2	68.2	71.4	121.6	261.4	432.1
Total	662.8	2,152.8	2,906.0	833.3	1,000.2	1,744.8	3,585.0	6,576.3

(a) Includes persons with other post-school qualifications. (b) Includes persons who never attended school. (c) Includes persons aged 15 to 20 years still at school.

TABLE 9. EMPLOYED PERSONS : EDUCATIONAL ATTAINMENT AND OCCUPATION, FEBRUARY 1985
(' 000)

(1997)								
Educational attainment								
Occupation	With post-school qualifications			Without post-school qualifications				
	Degree	Trade; technical or other certificate	Total (a)	Attended highest secondary level	Did not attend highest level of secondary school and left at age (years)		Total (b)	Total (c)
					16 or over	15 or under		
MALES								
Professional, technical, etc.	308.7	177.1	488.9	41.5	17.6	14.9	74.0	563.2
Administrative, executive and managerial	52.9	136.7	194.7	59.0	47.1	83.1	189.2	384.0
Clerical	30.5	63.6	101.9	112.2	59.0	52.0	223.2	326.4
Sales	10.7	72.0	87.6	62.7	48.0	63.3	174.1	273.7
Farmers, fisherpersons and timber- getters, etc.	7.7	71.5	86.1	36.9	61.7	160.7	260.3	350.0
Miners and quarryworkers	*	13.9	14.8	*	4.9	12.0	19.1	33.9
Transport and communication	*	71.4	77.7	26.1	51.4	135.3	213.1	292.0
Trades and production-process workers and labourers, n.e.c.	15.9	732.3	760.8	126.0	247.0	471.7	848.5	1,620.2
Service, sport and recreation	5.5	71.6	81.7	38.9	36.8	65.2	141.2	229.0
Total	435.6	1,410.0	1,894.1	505.4	573.4	1,058.3	2,142.7	4,072.5
FEMALES								
Professional, technical, etc.	162.7	234.4	399.7	35.5	18.7	15.3	69.5	469.3
Administrative, executive and managerial	5.9	21.6	29.4	10.4	9.3	20.3	39.9	69.4
Clerical	36.0	272.0	322.4	148.2	189.0	188.1	525.3	859.9
Sales	7.6	50.8	65.6	48.2	66.4	106.5	221.3	313.4
Farmers, fisherpersons and timber- getters, etc.	*	23.9	30.1	10.6	19.9	42.1	72.9	104.2
Transport and communication	*	8.3	9.6	*	7.2	19.7	30.7	41.2
Trades and production-process workers and labourers, n.e.c.(d)	*	26.2	33.6	22.3	51.8	117.3	191.7	226.3
Service, sport and recreation	7.1	105.6	121.4	48.9	64.6	177.3	291.0	420.2
Total	227.2	742.8	1,011.8	327.9	426.8	686.5	1,442.3	2,503.7
PERSONS								
Professional, technical, etc.	471.4	411.5	888.6	77.0	36.3	30.2	143.5	1,032.5
Administrative, executive and managerial	58.8	158.3	224.1	69.4	56.4	103.4	229.1	453.4
Clerical	66.5	335.6	424.3	260.4	247.9	240.1	748.5	1,186.3
Sales	18.4	122.8	153.2	110.8	114.4	169.8	395.4	587.2
Farmers, fisherpersons and timber- getters, etc.	12.0	95.3	116.2	47.5	81.6	202.8	333.2	454.2
Miners and quarryworkers	*	13.9	14.8	*	4.9	12.0	19.1	33.9
Transport and communication	*	79.7	87.2	29.9	58.6	155.0	243.8	333.2
Trades and production-process workers and labourers, n.e.c.	19.0	758.5	794.4	148.2	298.8	589.0	1,040.2	1,846.6
Service, sport and recreation	12.6	177.2	203.1	87.9	101.4	242.4	432.2	649.2
Total	662.8	2,152.8	2,906.0	833.3	1,000.2	1,744.8	3,585.0	6,576.3

(a) Includes persons with other post-school qualifications. (b) Includes persons who never attended school. (c) Includes persons aged 15 to 20 years still at school.
(d) Includes miners and quarryworkers.

TABLE 10. EMPLOYED PERSONS : EDUCATIONAL ATTAINMENT AND AGE, FEBRUARY 1985

	Age group (years)						Total	
	15-19	20-24	25-34	35-44	45-54	55 and over		
<i>Educational attainment</i>	— '000—						<i>(per cent)</i>	
MALES								
With post-school qualifications	17.1	208.0	607.1	553.6	318.2	190.2	1,894.1	46.5
Degree	*	30.6	157.9	141.3	65.8	39.9	435.6	10.7
Trade; technical or other certificate	13.3	173.1	432.1	399.7	245.1	146.7	1,410.0	34.6
Other	8.1		17.1	12.6	7.2	*	48.6	1.2
Without post-school qualifications(a)	264.6	313.6	500.4	436.6	349.4	277.9	2,142.7	52.6
Attended highest level of secondary school available	81.3	114.3	151.3	84.5	41.8	32.2	505.4	12.4
Did not attend highest level of secondary school available	183.2	199.3	349.1	350.5	305.9	243.7	1,631.7	40.1
Left at age—								
18 years or over	*	7.6	8.8	6.4	*	*	29.7	0.7
16 or 17 years	101.6	117.0	159.3	94.9	45.9	25.1	543.7	13.4
14 or 15 years	78.3	73.2	165.5	213.5	200.7	161.9	893.1	21.9
13 years or under	*	*	15.5	35.8	56.7	55.2	165.2	4.1
Still at school	35.7	*	35.7	0.9
Total	317.5	521.6	1,107.6	990.2	667.6	468.1	4,072.5	100.0
FEMALES								
With post-school qualifications	49.0	184.3	337.7	253.9	130.5	56.5	1,011.8	40.4
Degree	*	33.9	99.7	55.3	26.6	10.9	227.2	9.1
Trade; technical or other certificate	45.8	140.8	227.9	185.6	98.9	43.8	742.8	29.7
Other	*	9.5	10.1	13.0	5.0	*	41.8	1.7
Without post-school qualifications(a)	197.8	247.5	324.2	340.4	228.3	104.1	1,442.3	57.6
Attended highest level of secondary school available	69.2	97.7	70.7	51.0	25.9	13.4	327.9	13.1
Did not attend highest level of secondary school available	128.5	149.8	253.4	289.0	201.8	90.7	1,113.2	44.5
Left at age—								
18 years or over	*	5.3	6.1	*	*	*	15.8	0.6
16 or 17 years	74.6	93.4	115.8	75.2	35.8	16.2	411.0	16.4
14 or 15 years	52.0	48.8	124.2	187.1	138.0	60.2	610.4	24.4
13 years or under	*	*	7.2	24.7	27.8	14.2	76.1	3.0
Still at school	49.6	*	49.6	2.0
Total	296.4	431.8	661.9	594.3	358.7	160.7	2,503.7	100.0
PERSONS								
With post-school qualifications	66.1	392.2	944.8	807.5	448.6	246.7	2,906.0	44.2
Degree	*	64.5	257.6	196.6	92.4	50.8	662.8	10.1
Trade; technical or other certificate	59.1	313.9	660.0	585.3	344.0	190.5	2,152.8	32.7
Other	6.2	13.9	27.2	25.6	12.2	5.4	90.4	1.4
Without post-school qualifications	462.4	561.1	824.6	777.1	577.7	382.0	3,585.0	54.5
Attended highest level of secondary school available	150.5	212.1	222.1	135.4	67.6	45.6	833.3	12.7
Did not attend highest level of secondary school available	311.7	349.1	602.5	639.6	507.7	334.5	2,745.1	41.7
Left at age—								
18 years or over	4.6	13.0	15.0	8.4	*	*	45.5	0.7
16 or 17 years	176.2	210.4	275.1	170.1	81.7	41.3	954.7	14.5
14 or 15 years	130.3	122.1	289.7	400.6	338.8	222.0	1,503.6	22.8
13 years or under	*	*	22.8	60.5	84.5	69.4	241.3	3.7
Never attended school	*	*	*	*	*	*	6.6	0.1
Still at school	85.3	*	85.3	1.3
Total	613.8	953.4	1,769.4	1,584.5	1,026.3	628.7	6,576.3	100.0

(a) Includes persons who never attended school.

TABLE 11. UNEMPLOYED PERSONS : EDUCATIONAL ATTAINMENT AND AGE, FEBRUARY 1985

Educational attainment	Age group (years)						Total	(per cent)
	15-19	20-24	25-34	35-44	45-54	55 and over		
— '000—								
MALES								
With post-school qualifications(a)	7.2	21.8	29.8	14.4	13.3	7.9	94.4	24.2
Degree	*	*	*	*	*	*	12.5	3.2
Trade; technical or other certificate	5.8	16.5	24.4	12.8	11.2	7.1	77.7	19.9
Without post-school qualifications(b)	79.3	64.0	62.9	33.2	23.7	20.9	284.0	72.8
Attended highest level of secondary school available	20.4	17.9	10.9	6.1	*	*	60.3	15.5
Did not attend highest level of secondary school available	58.9	46.1	52.0	26.7	21.3	18.0	222.9	57.1
Left at age—								
16 years or over	27.3	23.6	18.2	5.7	*	*	79.3	20.3
15 years or under	31.7	22.4	33.8	21.0	18.4	16.4	143.7	36.8
Still at school	12.0	*	12.0	3.1
Total	98.6	85.9	92.7	47.6	37.0	28.8	390.4	100.0
FEMALES								
With post-school qualifications(a)	6.7	16.3	21.2	18.0	6.8	*	70.6	24.9
Degree	*	*	*	*	*	*	11.2	3.9
Trade; technical or other certificate	5.7	11.6	16.0	14.0	5.2	*	53.7	19.0
Without post-school qualifications(b)	69.6	40.7	37.3	27.4	14.2	*	192.8	68.1
Attended highest level of secondary school available	19.4	8.9	7.6	*	*	*	41.2	14.5
Did not attend highest level of secondary school available	50.2	31.8	29.7	24.3	12.3	*	151.7	53.5
Left at age—								
16 years or over	26.2	17.8	12.3	6.2	*	*	65.9	23.3
15 years or under	24.1	14.1	17.4	18.1	9.2	*	85.8	30.3
Still at school	19.9	*	19.9	7.0
Total	96.2	57.0	58.6	45.4	21.0	5.1	283.2	100.0
PERSONS								
With post-school qualifications(a)	13.9	38.1	51.0	32.4	20.1	9.4	164.9	24.5
Degree	*	7.1	8.7	*	*	*	23.7	3.5
Trade; technical or other certificate	11.5	28.1	40.4	26.8	16.4	8.2	131.4	19.5
Without post-school qualifications(b)	149.0	104.7	100.3	60.6	37.9	24.4	476.8	70.8
Attended highest level of secondary school available	39.8	26.8	18.6	9.1	*	*	101.5	15.1
Did not attend highest level of secondary school available	109.2	77.9	81.7	51.0	33.5	21.3	374.6	55.6
Left at age—								
16 years or over	53.4	41.4	30.5	11.9	5.9	*	145.2	21.6
15 years or under	55.7	36.5	51.2	39.1	27.6	19.3	229.4	34.1
Still at school	31.8	*	31.8	4.7
Total	194.8	142.8	151.3	93.0	58.0	33.8	673.6	100.0

(a) Includes persons with other post-school qualifications. (b) Includes persons who never attended school.

TABLE 12. UNEMPLOYED PERSONS : EDUCATIONAL ATTAINMENT AND DURATION OF CURRENT PERIOD OF UNEMPLOYMENT, FEBRUARY 1985

	Duration of current period of unemployment (weeks)							Average (mean) duration	Median duration
	1 and under 4	4 and under 8	8 and under 13	13 and under 26	26 and under 52	52 and over	Total		
Educational attainment	— '000—							—weeks—	
MALES									
With post-school qualifications(a)	13.0	16.3	13.6	12.6	12.5	26.4	94.4	40.3	14.8
Degree	*	*	4.6	*	*	*	12.5	30.6	12.9
Trade; technical or other certificate	11.4	12.3	10.3	9.8	10.2	23.7	77.7	42.9	15.9
Without post-school qualifications(b)	34.4	35.0	34.9	36.2	36.3	107.3	284.0	57.4	26.1
Attended highest level of secondary school available	10.9	11.7	9.2	8.6	5.6	14.3	60.3	32.7	12.3
Did not attend highest level of secondary school available	23.5	23.3	25.7	27.4	30.7	92.4	222.9	63.5	29.2
Left at age—									
16 years or over	9.7	8.1	12.6	9.0	12.1	27.8	79.3	47.4	26.1
15 years or under	13.8	15.2	13.1	18.4	18.6	64.6	143.7	72.3	35.4
Still at school	5.2	*	*	*	*	*	12.0	15.2	8.9
Total	49.5	54.3	51.3	49.9	50.5	134.9	390.4	51.9	22.1
FEMALES									
With post-school qualifications(a)	20.1	13.4	6.4	9.3	6.8	14.6	70.6	29.4	9.1
Degree	6.2	*	*	*	*	*	11.2	23.0	5.4
Trade; technical or other certificate	16.6	9.3	*	8.6	4.6	10.5	53.7	27.4	8.7
Without post-school qualifications(b)	36.5	23.4	31.1	24.2	25.0	52.6	192.8	38.5	14.4
Attended highest level of secondary school available	8.4	5.7	11.7	5.9	*	6.6	41.2	23.7	10.4
Did not attend highest level of secondary school available	28.1	17.8	19.4	18.3	22.2	46.0	151.7	42.5	19.2
Left at age—									
16 years or over	11.7	7.0	9.7	7.7	11.6	18.3	65.9	36.6	18.0
15 years or under	16.4	10.8	9.6	10.6	10.6	27.7	85.8	47.0	19.5
Still at school	5.7	*	*	*	*	*	19.9	15.3	8.8
Total	62.4	40.1	40.9	36.3	34.9	68.7	283.2	34.6	12.7
PERSONS									
With post-school qualifications(a)	33.0	29.7	20.0	22.0	19.3	41.0	164.9	35.7	12.9
Degree	*	6.5	*	*	*	*	23.7	27.0	9.9
Trade; technical or other certificate	28.1	21.5	14.5	18.3	14.8	34.2	131.4	36.6	13.5
Without post-school qualifications(b)	70.9	58.4	66.0	60.4	61.3	159.8	476.8	49.7	20.8
Attended highest level of secondary school available	19.3	17.4	20.9	14.5	8.4	20.9	101.5	29.0	10.8
Did not attend highest level of secondary school available	51.6	41.0	45.1	45.7	52.9	138.3	374.6	55.0	26.2
Left at age—									
16 years or over	21.3	15.0	22.3	16.7	23.7	46.1	145.2	42.5	22.7
15 years or under	30.2	26.0	22.7	29.0	29.2	92.3	229.4	62.9	26.8
Still at school	7.9	6.3	6.2	*	4.8	*	31.8	15.2	8.9
Total	111.9	94.4	92.2	86.2	85.4	203.6	673.6	44.6	16.8

(a) Includes persons with other post-school qualifications. (b) Includes persons who never attended school.

TABLE 13. PERSONS NOT IN THE LABOUR FORCE : EDUCATIONAL ATTAINMENT, MAJOR ACTIVITY WHILE OUT OF THE LABOUR FORCE AND WHETHER IN THE LABOUR FORCE IN THE LAST TWELVE MONTHS, FEBRUARY 1985
(' 000)

	Major activity while out of the labour force								
	Kept house	Studying	Retired, voluntarily inactive	Own illness, injury	Permanently unable to work	Unpaid voluntary work	Other activity	Not asked major activity	Total
Educational attainment									
IN THE LABOUR FORCE IN THE LAST TWELVE MONTHS									
With post-school qualifications(a)	98.6	14.4	37.8	13.0	*	*	12.4	18.0	195.9
Degree	13.1	10.2	7.1	*	*	*	*	*	37.1
Trade; technical or other certificate	79.6	*	29.7	11.4	*	*	9.2	15.0	149.7
Without post-school qualifications(b)	204.7	39.1	53.8	28.5	*	*	13.6	54.6	395.5
Attended highest level of secondary school available	30.9	30.9	10.1	*	*	*	*	10.0	88.2
Did not attend highest level of secondary school available	173.5	8.2	43.3	25.8	*	*	9.9	44.4	306.0
Left at age—									
16 years or over	64.2	5.7	8.9	5.8	*	*	*	10.8	99.0
15 years or under	109.3	*	34.4	20.0	*	*	6.3	33.6	207.0
Still at school	*	52.9	*	*	*	*	*	*	59.6
Total	303.4	106.3	92.4	41.6	*	*	27.4	77.0	651.0
Males	6.9	57.0	67.8	26.2	*	*	12.2	31.2	202.4
Females	296.5	49.3	24.7	15.4	*	*	15.2	45.8	448.6
NOT IN THE LABOUR FORCE IN THE LAST TWELVE MONTHS									
With post-school qualifications(a)	403.9	18.1	228.9	29.1	8.3	15.3	5.1	..	708.6
Degree	44.3	9.3	32.5	*	*	*	*	..	92.9
Trade; technical or other certificate	340.5	8.1	191.8	24.6	8.1	11.8	*	..	588.9
Without post-school qualifications	1,849.4	67.1	678.6	107.9	49.4	28.3	13.3	..	2,794.1
Attended highest level of secondary school available	186.4	51.0	54.9	6.1	*	*	*	..	305.9
Did not attend highest level of secondary school available	1,640.7	15.8	611.4	99.1	42.9	25.3	10.5	..	2,445.7
Left at age—									
16 years or over	322.9	9.4	60.6	14.4	5.7	5.9	*	..	421.1
15 years or under	1,317.7	6.4	550.9	84.7	37.2	19.4	8.3	..	2,024.7
Never attended school	22.4	*	12.3	*	4.5	*	*	..	42.5
Still at school	*	291.5	*	*	*	*	*	..	292.4
Total	2,253.3	376.7	908.0	137.0	58.0	43.8	18.4	..	3,795.2
Males	35.8	196.7	717.9	96.7	41.8	8.2	10.0	..	1,107.1
Females	2,217.5	180.1	190.1	40.3	16.2	35.6	8.3	..	2,688.1
TOTAL									
With post-school qualifications	502.5	32.5	266.6	42.1	9.0	16.4	17.5	18.0	904.6
Degree	57.4	19.5	39.7	*	*	*	*	*	130.0
Trade; technical or other certificate	420.1	11.6	221.5	36.1	8.9	12.5	13.0	15.0	738.6
Other	25.0	*	5.5	*	*	*	*	*	36.0
Without post-school qualifications	2,054.2	106.2	732.5	136.4	49.9	29.1	26.9	54.6	3,189.6
Attended highest level of secondary school available	217.3	81.9	65.0	8.4	*	*	6.2	10.0	394.0
Did not attend highest level of secondary school available	1,814.2	24.0	654.7	125.0	43.3	25.8	20.4	44.4	2,751.8
Left at age—									
16 years or over	387.1	15.0	69.5	20.2	5.7	5.9	5.8	10.8	520.1
15 years or under	1,427.1	9.0	585.2	104.8	37.6	19.9	14.6	33.6	2,231.7
Never attended school	22.7	*	12.7	*	4.5	*	*	*	43.8
Still at school	*	344.4	*	*	*	*	*	*	352.0
Total	2,556.7	483.0	1,000.4	178.6	59.1	45.6	45.8	77.0	4,446.2
Males	42.7	253.7	785.7	122.8	42.6	8.6	22.2	31.2	1,309.5
Females	2,514.0	229.4	214.7	55.7	16.5	37.0	23.6	45.8	3,136.7

(a) Includes persons with other post-school qualifications. (b) Includes persons who never attended school.

ADDITIONAL TABLES

The following is a list of additional tables of results from the survey which are available to users on request. These tables show a selection of estimates on an Australia-wide basis. Tables disaggregated by State/Territory and other tables may also be available. All tables are dissected by sex.

Civilian population aged 15 years and over

- Educational attainment, age and marital status
- Educational attainment, marital status and labour force status at February 1985
- Educational attainment, age and family status
- Educational attainment, age and labour force status at February 1985
- Educational attainment, labour force status at February 1985, age and educational institution attended during 1984 (for persons aged 15-25 years)
- Educational attainment, labour force status at February 1985, birthplace and period of arrival (for persons born overseas)
- Educational attainment, age, birthplace and period of arrival (for persons born overseas)
- Educational attainment, family status, birthplace and period of arrival (for persons born overseas)
- Main field of study (for persons with a degree qualification), birthplace and period of arrival (for persons born overseas)
- Main field of study (for persons with a trade, technical or other certificate qualification), birthplace and period of arrival (for persons born overseas)
- Main field of study (for persons with a trade, technical or other certificate qualification), labour force status at February 1985, age and occupation (if any)
- Main field of study (for persons with a degree qualification), age and marital status
- Main field of study (for persons with a trade, technical or other certificate qualification), age and marital status
- Main field of study (for persons with a degree qualification) and family status
- Main field of study (for persons with a trade, technical or other certificate qualification) and family status
- Main field of study (for persons with a degree qualification), marital status and labour force status at February 1985
- Main field of study (for persons with a trade, technical or other certificate qualification), marital status and labour force status at February 1985

Employed persons

- Educational attainment, industry and occupation
- Educational attainment, industry and marital status
- Educational attainment, occupation and marital status
- Educational attainment, birthplace and occupation
- Educational attainment, birthplace and industry
- Educational attainment, status of worker and occupation
- Educational attainment, occupation and full-time/part-time status
- Educational attainment, industry and full-time/part-time status
- Main field of study (for persons with a trade, technical or other certificate qualification), birthplace and occupation
- Main field of study (for persons with a trade, technical or other certificate qualification), birthplace and industry
- Main field of study (for persons with a degree qualification), occupation and marital status
- Main field of study (for persons with a trade, technical or other certificate qualification), occupation and marital status
- Main field of study (for persons with a trade, technical or other certificate qualification), industry, occupation and age
- Main field of study (for persons with a trade, technical or other certificate qualification), industry, occupation and full-time/part-time status
- Main field of study (for persons with a degree qualification), industry and marital status
- Main field of study (for persons with a trade, technical or other certificate qualification), industry and marital status

Persons who attended an educational institution during 1984 (aged 15-25 years only)

- Type of institution attended, whether attended full-time or part-time, whether attended full-year or part-year, marital status and age
- Type of institution attended, whether attended full-time or part-time, whether attended full-year or part-year, labour force status at February 1985 and age
- Type of institution attended, whether attended full-time or part-time, whether attended full-year or part-year, family status and age
- Type of institution attended, whether attended full-time or part-time, whether attended full-year or part-year, birthplace and period of arrival (for persons born overseas)
- Type of institution attended, whether attended full-time or part-time, whether attended full-year or part-year, marital status and labour force status at February 1985
- Type of institution attended, educational attainment and labour force status at February 1985
- Type of institution attended, educational attainment and occupation (if any)
- Type of institution attended, educational attainment and industry (if any)
- Whether attended full-year or part-year, occupation (if any) and marital status
- Whether attended full-year or part-year, industry (if any) and marital status
- Age, family status, birthplace and period of arrival (for persons born overseas)

Persons not in the labour force

- Educational attainment and age

TECHNICAL NOTE

Estimation procedure

The estimates are derived from the population survey by use of a ratio estimation procedure which ensures that the estimates conform to an independently estimated distribution of the population for each capital city and remainder of State by age and sex, rather than to the corresponding distribution within the sample itself.

Reliability of the estimates

2. Since the estimates in this publication are based on information obtained from occupants of a sample of dwellings, they are subject to sampling variability; that is, they may differ from the figures that would have been produced if all dwellings had been included in the survey. One measure of the likely difference is given by the *standard error*, which indicates the extent to which an estimate might have varied by chance because only a sample of dwellings was included. There are about two chances in three that a sample estimate will differ by less than one standard error from the figure that would have been obtained if all dwellings had been included, and about nineteen chances in twenty that the difference will be less than two standard errors. Another measure of the likely difference is the *relative standard error*, which is obtained by expressing the standard error as a percentage of the estimate.

3. Space does not allow for the separate indication of the standard errors of all estimates in this publication. A table of standard errors for general application is given on the following page. Since they are averages based on calculations for a limited number of past surveys over a wide range of labour force characteristics these figures will not give a precise measure of the standard error of a particular estimate but they will provide an indication of its magnitude.

4. An example of the calculation and the use of standard errors in relation to estimates of persons is as follows. From Table 1 the estimated number of persons in the labour force with post-school qualifications is 3,070,900. Since this estimate is between 2,000,000 and 5,000,000 the standard error for Australia will be between 14,200 and 19,100 in the standard error table and can be approximated as 15,900 (rounded to the nearest 100). Therefore there are about two chances in three that the value that would have been produced if all dwellings had

been included in the survey will fall in the range 3,055,000 to 3,086,800 and about nineteen chances in twenty that the value will fall within the range 3,039,100 and 3,102,700. This example is illustrated in the diagram.

5. As can be seen from the standard error table, *the smaller the estimate the higher is the relative standard error*. Very small estimates are thus subject to such high standard errors (relative to the size of the estimate) as to detract seriously from their value for most reasonable uses. In the tables in this publication, estimates less than the lowest levels shown in the standard error table have not been published. Although figures for these small components can in some cases be derived by subtraction, they should not be regarded as reliable.

6. Proportions and percentages formed from the ratio of two estimates are also subject to sampling errors. The size of the error depends on the accuracy of both the numerator and the denominator. The formula for the relative standard error (RSE) of a proportion is given below:

$$RSE(x/y) = \sqrt{[RSE(x)]^2 + [RSE(y)]^2}$$

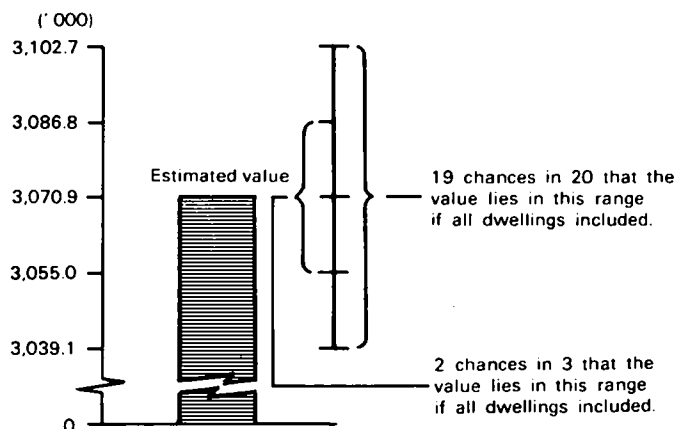
7. Considering the example from paragraph 4 above, the 3,070,900 persons in the labour force with post-school qualifications represent 77.2 per cent of the 3,975,500 persons in the total population who had post-school qualifications. The standard error for 3,975,500 is approximately 17,400 so the relative standard error is 0.4 per cent. The relative standard error for 3,070,900 is 0.5 per cent. Applying the above formula, the relative standard error of the proportion is $\sqrt{(0.5)^2 + (0.4)^2}$ or 0.3 per cent, giving a standard error for the proportion (77.2 per cent) of 0.2 percentage points. Therefore, there are about two chances in three that the proportion for persons with post-school qualifications is between 77.0 per cent and 77.4 per cent and nineteen chances in twenty the proportion is within the range 76.8 per cent to 77.6 per cent.

8. Published figures may also be used to estimate the difference between two survey estimates (of numbers or percentages). Such a figure is itself an estimate and is therefore subject to sampling error. The sampling error of the difference between two estimates depends on their standard errors and the relationship (correlation) between them. An approximate standard error (SE) of the difference between two estimates (x-y) may be calculated by the following formula:

$$SE(x-y) = \sqrt{[SE(x)]^2 + [SE(y)]^2}$$

While this formula will only be exact for differences between separate and uncorrelated characteristics or sub-populations, it is expected to provide a good approximation for all differences likely to be of interest in this publication.

9. The imprecision due to sampling variability, which is measured by the standard error, should not be confused with inaccuracies that may occur because of imperfections in reporting by interviewers and respondents and errors made in the coding and processing of data. Inaccuracies of this kind are referred to as the *non-sampling error*, and they may occur in any enumeration, whether it be a full count or a sample.



STANDARD ERRORS OF ESTIMATES

Size of estimate (persons)	N.S.W.	Vic.	Qld	S.A.	W.A.	Tas.	N.T.	A.C.T.	Australia	
									Relative standard error (per cent)	
					—number—					
1,500						350				
1,800						380		° 410		
2,000						400	490	420		
2,500				580	620	440	540	460		
3,000				630	670	470	580	490		
3,500			860	680	720	500	610	520		
4,000			920	720	760	530	650	550		
4,500			970	760	800	560	680	570	1,050	23.9
5,000	1,200	1,250	1,000	790	840	580	710	590	1,150	22.7
6,000	1,350	1,350	1,100	860	900	630	760	630	1,250	20.7
7,000	1,450	1,450	1,200	910	970	670	800	670	1,350	19.2
10,000	1,700	1,700	1,400	1,150	1,100	770	920	750	1,600	18.0
20,000	2,300	2,250	1,900	1,400	1,500	990	1,200	940	2,250	11.1
50,000	3,350	3,300	2,700	1,950	2,100	1,350	1,650	1,200	3,400	6.8
100,000	4,450	4,300	3,550	2,500	2,700	1,650	2,100	1,450	4,550	4.6
200,000	5,900	5,500	4,550	3,150	3,400	2,050		1,700	6,100	3.0
300,000	6,800	6,300	5,200	3,600	3,850				7,100	2.4
500,000	8,300	7,500	6,100	4,200	4,500				8,700	1.7
1,000,000	10,600	9,300	7,600						11,200	1.1
2,000,000	13,400	11,400							14,200	0.7
5,000,000	18,000	14,600							19,100	0.4
10,000,000									23,500	0.2
12,000,000									24,700	0.2

— Estimates below the levels indicated have not been published, see paragraph 5 above.